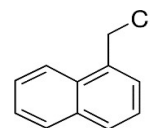




1-CHLORO METHYL NAPHTHALENE

PRODUCT CODE	R04508
SYNONYMS	1-(Chloromethyl)Naphthalene
C.I. NO.	--
CASR NO.	(86-52-2)
ATOMIC OR MOLECULAR FORMULA	C₁₁H₉Cl
ATOMIC OR MOLECULAR WEIGHT	176.64
PROPERTIES	--



PARAMETER	LIMIT
Description	Clear, colourless to yellow liquid or solid.
Minimum assay (HPLC)	92.5 %
Wt. per ml at 25°C	1.17 g
Melting range	27 – 30 °C
Refractive index (n) _D ²⁰	1.6335 – 1.6405

Note(s): Assay (if applicable) method mentioned.

WARNING HAZARD DANGER Harmful if swallowed. Causes skin irritation. Causes serious eye damage. May cause respiratory irritation. PRECAUTIONARY STATEMENTS Prevention: Avoid breathing dust/ fume/ gas/ mist/ vapours/ spray. Wash thoroughly after handling. Do not eat, drink or smoke when using this product. Use only outdoors or in a well- ventilated area. Wear protective gloves/protective clothing/eye protection/face protection. Response: IF SWALLOWED: Call a POISON CENTER or doctor/physician if you feel unwell. IF ON SKIN: Wash with plenty of soap and water. IF INHALED: Remove victim to fresh air and keep at rest in a position. comfortable for breathing. IF IN EYES: Rinse cautiously with water for several minutes. Remove. Contact lenses, if present and easy to do. Continue rinsing. Immediately call a POISON CENTER or doctor/physician. Call a POISON CENTER or doctor/physician if you feel unwell. Rinse mouth. If skin irritation occurs: Get medical advice/attention. Take off contaminated clothing and wash before re- use	IMDG Code : 8/II UN No. : 3261 IATA : 8
---	---

Disposal : The chemical should be mixed with combustible solvent and burnt in a chemical incinerator equipped with burner and scrubber

Hazard Pictogram(s) :



GHS05

GHS07

Replace Date 1 April 2023